



Holiday Décor & Pet Safety

When decorating your home for the holiday season, keep these important pet safety tips in mind. ❄️

Common **holiday décor** dangers include: festive plants, holiday gift wrap, festive trees, ornaments, lights, candles, food items, etc.



Symptoms of **plant poisoning** often includes: drooling, vomiting, gastrointestinal issues, lack of coordination/balance, etc. Consider using silk or variety plants as an alternative.

If you suspect that your pet has nibbled on a toxic plant or ingested a decoration, be sure to contact your veterinarian right away. ❄️



TREE

Real Tree: Needles can cause mouth irritation & stomach pain.

If large amounts are ingested, it can lead to serious abdominal pain-GI irritation & obstruction.

Artificial Tree: Mostly made of plastic or aluminum. Ingestion can cause gastrointestinal (GI) problems.

To Do: Vacuum shed needles frequently.

PRESERVATIVES



Tree water mixed with preservatives are used to keep the tree fresh longer, but these chemicals can be toxic.

To Do: Use regular water for your tree (avoid: aspirin, sugar, fertilizer, etc.) to keep your pet safe from poisoning.

Note: Wrap the base of the trunk in tin foil to help deter climbing.

MISTLETOE



Contains multiple toxic substances.

Symptoms: severe stomach pain, drop in blood pressure, breathing problems, etc.

If ingested in large amounts, can cause: seizures or death.

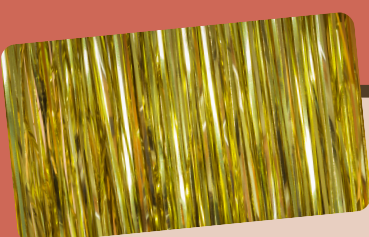
POINSETTIA



The leaves from this plant can irritate & damage your pet's mouth & stomach.

Symptoms: nausea, vomiting, etc.

TINSEL



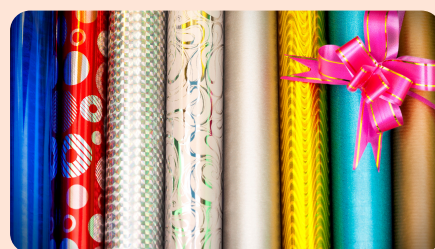
Tinsel & Ribbon can get wrapped around a pet's tongue & cause gastrointestinal damage/blockage.

Generally, cats are more prone to tinsel poisoning.

Symptoms: vomiting, lethargy, diarrhea, dehydration, abdominal pain, etc.

To Do: Avoid tinsel & all string-like decorations, including curling ribbon.

WRAPPING PAPER



If ingested, it can cause irritation in the mouth.

In large amounts, it can cause stomach/GI obstruction.

Ribbon, yarn & strings can wrap around the intestines, requiring surgery.

ENGLISH IVY



Symptoms: loss of appetite, vomiting, diarrhea, abdominal pain, etc.

Dermal reactions include: blistering, redness & swelling.

CHRISTMAS ROSE



Symptoms: Lethargy, vomiting, drooling, gastrointestinal problems, etc.



Holiday Décor & Pet Safety

HOLLY



Has sharp leaves & a bitter taste.

Toxic if ingested, even in small doses.

Symptoms: drooling, vomiting, head shaking, loss of appetite, etc.

SNOW GLOBES



Contains: ethylene glycol (antifreeze).

Antifreeze is extremely toxic to pets & can result in death.

Symptoms: nausea, rapid heartbeat, seizures, coma, etc.

GLASS ORNAMENTS



When glass ornaments fall & break, and your pet steps on them, they can cut their paws.

If your pet tries to eat the glass, it can cause severe cuts in the mouth & abdominal issues.

To Do: Place any breakable ornaments high on the tree & well-secured.

EDIBLE ORNAMENTS



Most of these ornaments are made from: sugar, candy canes, glue & salt dough.

Ornaments that smell good attract pets, and if ingested, can be hazardous/toxic.

To Do: Buy unbreakable plastic or wood ornaments.

POPCORN STRANDS



The string that keeps the popcorn together is usually made of fishing line.

If ingested, it can cause gastrointestinal damage/blockage.

Surgery may be needed.

ORNAMENT HANGERS



Small wires that keep ornaments on the tree.

If chewed/ingested, it can become lodged in your pet's digestive tract or even puncture through it.

Surgery is often required if ingested.



AMARYLLIS

Symptoms: stomach pain, vomiting, diarrhea, lethargy, tremors, etc.



POTPOURRI

Potpourri & essential oil blends produce fragrant décor.

Symptoms of ingestion: gagging, drooling, dehydration, lethargy, muscle tremors, etc.

LIGHTS



Stringed lights can cause strangulation.

Cords can cause: burns, electrical shock & seizures.

To Do: Bundle-up loose cords with protective plastic covers, and hang stringed lights out of your pet's reach.

CANDLES



Lit candles pose a serious fire hazard.

Can cause burns to your pet.

To Do: Use electrical, battery-powered, or LED taper candles as a safer alternative.