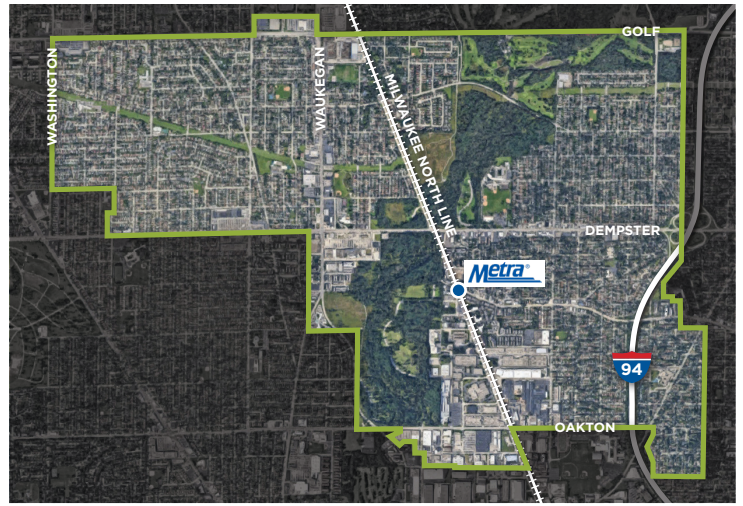


MORTON GROVE

Incredibly Close  Amazingly Open

COMMUNITY OVERVIEW



QUICK FACTS

Median Household Income

\$85,476

MORTON GROVE

\$85,476

ILLINOIS

\$65,030

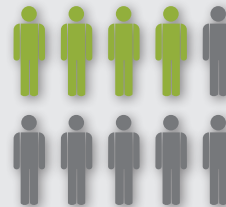
\$61,937
UNITED STATES

Education

50.4%

AGED 25+ HAVE
EARNED A COLLEGE
DEGREE

Diversity



41.4%

WERE BORN
OUTSIDE OF THE
UNITED STATES

Transportation

- 1** INTERSTATE 
- 1** METRA LINE 
- 6** BUS LINES 
- 3.4** MILES OF
PAVED TRAIL 
- 15** MINUTES
TO O'HARE 

Population

23,256
RESIDENTS

5.09 SQUARE MILES
4,570 RESIDENTS/MI²

Housing

9,012
UNITS

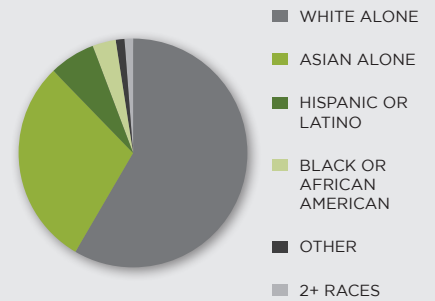
84.4%
OWNER-OCCUPIED

Home Value



\$308,424
MEDIAN
HOME VALUE

Race & Ethnicity



DOING BUSINESS



\$477,182,194
IN ANNUAL RETAIL SALES

\$20,519

IN ANNUAL RETAIL SALES PER CAPITA



11,395
WORKERS IN
MORTON GROVE
2,763,344
WORKERS IN
COOK COUNTY

Average Daily Traffic



44,900

DEMPSTER STREET

26,200

WAUKEGAN ROAD



TRAVEL DISTANCE

CITY	MILES	DRIVING DAYS
Atlanta	731	2
Chicago	2	0
Cleveland	359	1
Dallas	934	2
Denver	1,009	2
Detroit	297	1
Kansas City	528	1
Los Angeles	2,018	4
Memphis	547	1
Minneapolis	401	1
New Orleans	940	2
New York	804	2
St. Louis	304	1
Seattle	2,056	4

TOP 10 EMPLOYERS

#	EMPLOYER	EMPLOYEES
1	John Crane	535
2	Xylem	475
3	Amazon	363
4	New Avon LLC	362
5	Schwarz Paper	244
6	Lakeshore Recycling	225
7	MG Living & Rehab	205
8	Shore Koenig	200
9	Quantum Color Graphics	190
10	Wockhardt	176